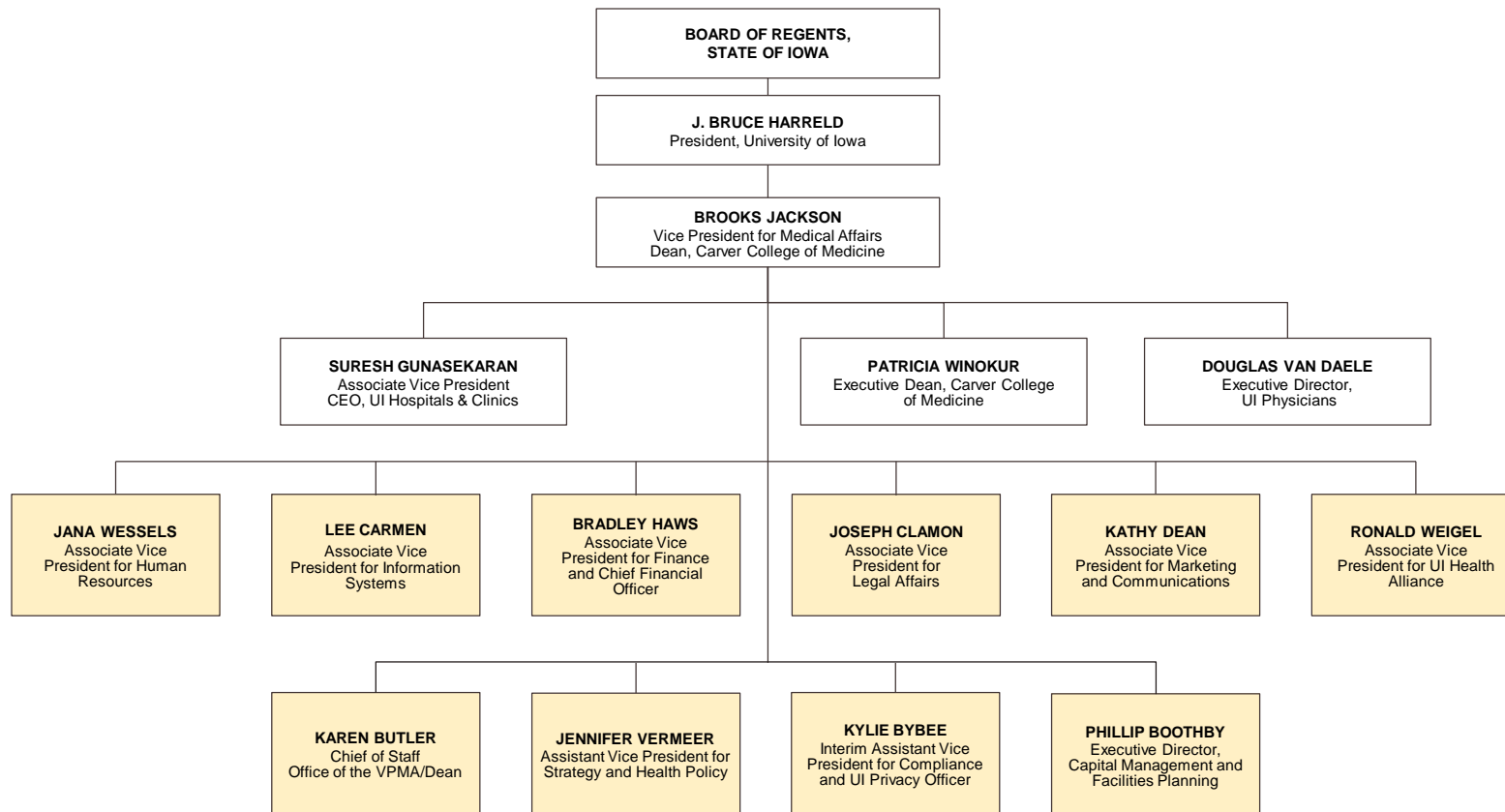



Organization

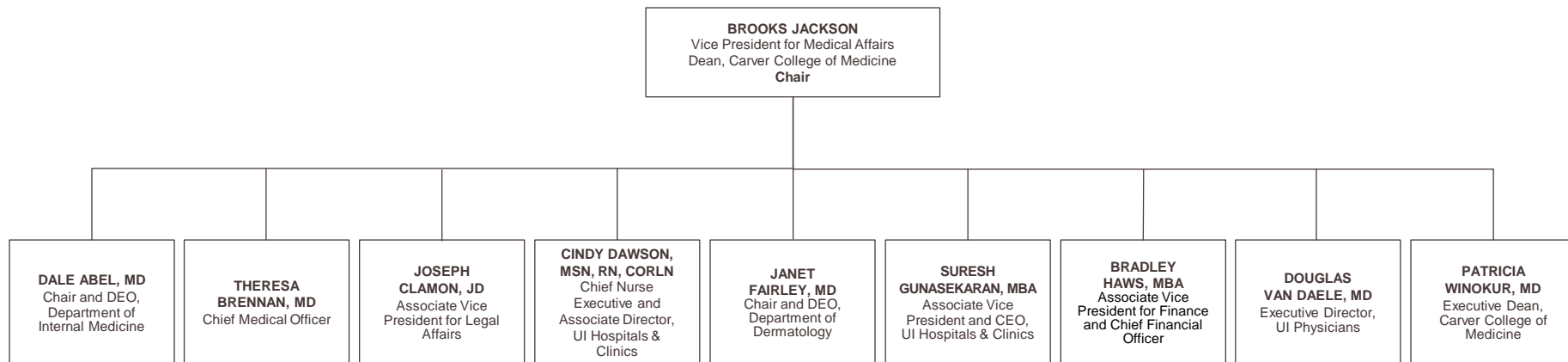
University of Iowa Health Care



 UI Health Care Corporate Services

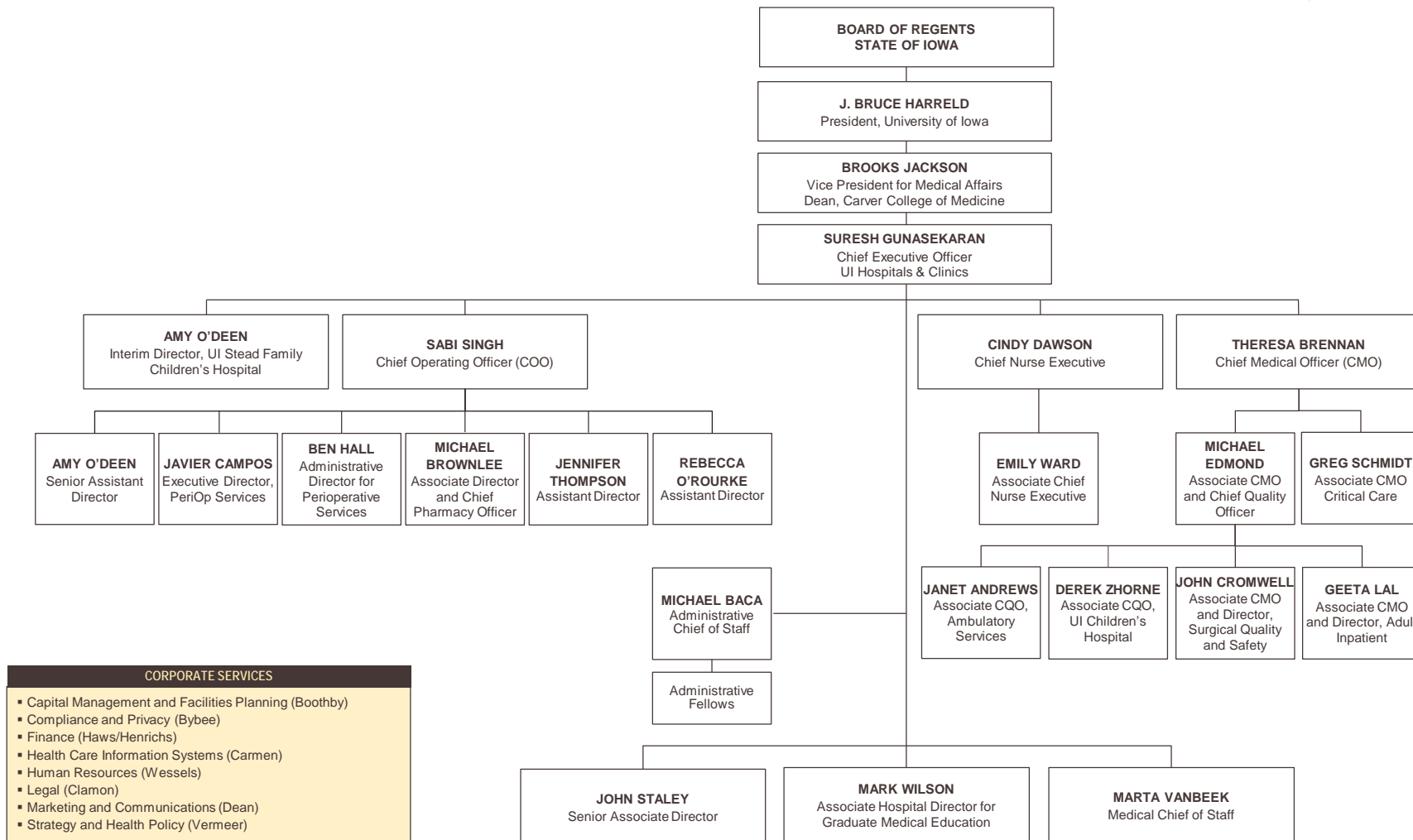
VPMA Executive Management Group

University of Iowa Health Care



University of Iowa Hospitals & Clinics

University of Iowa Health Care

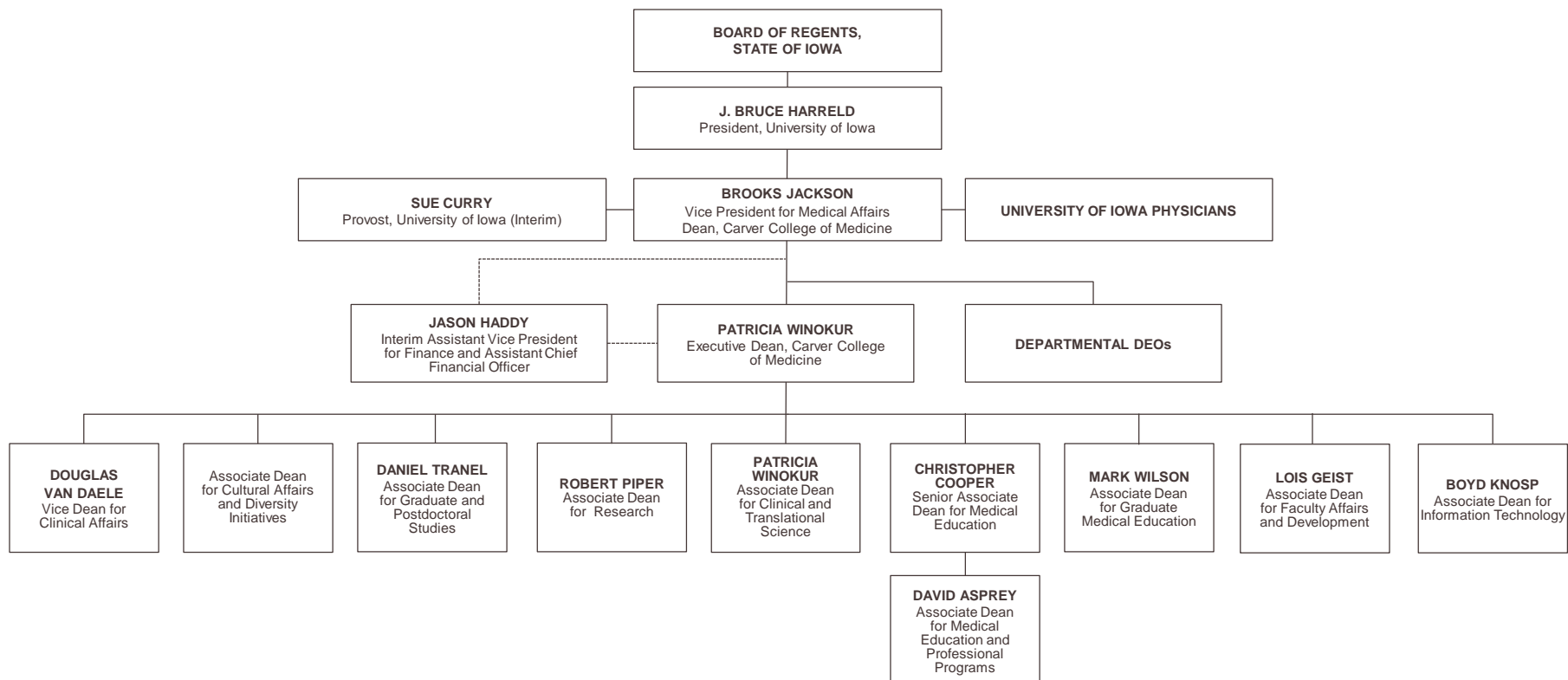


CORPORATE SERVICES

- Capital Management and Facilities Planning (Boothby)
- Compliance and Privacy (Bybee)
- Finance (Haws/Henrichs)
- Health Care Information Systems (Carmen)
- Human Resources (Wessels)
- Legal (Clamon)
- Marketing and Communications (Dean)
- Strategy and Health Policy (Vermeer)

University of Iowa Carver College of Medicine

University of Iowa Health Care

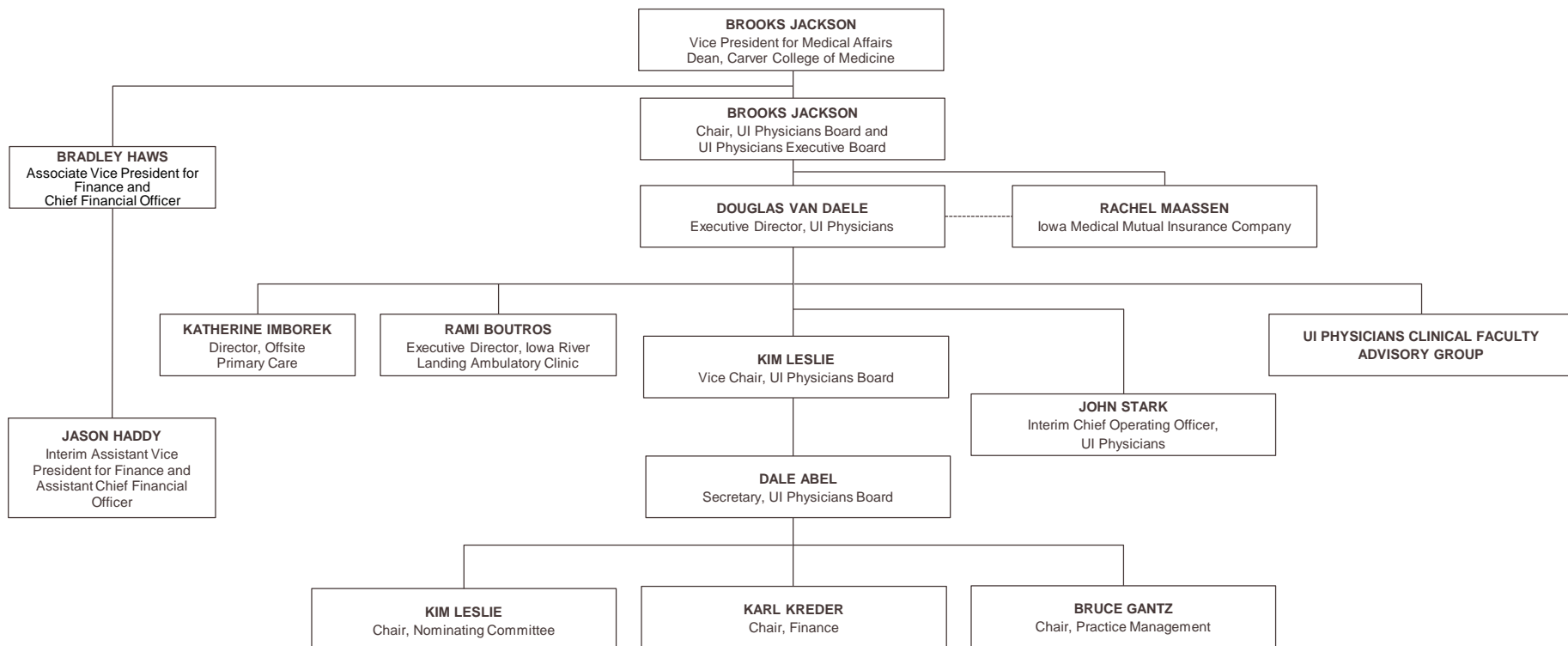


CORPORATE SERVICES

- Capital Management and Facilities Planning (Boothby)
- Compliance and Privacy (Bybee)
- Finance (Haws/Haddy)
- Health Care Information Systems (Carmen)
- Human Resources (Wessels)
- Legal (Clamon)
- Marketing and Communications (Dean)
- Strategy and Health Policy (Vermeer)

University of Iowa Physicians

University of Iowa Health Care



CORPORATE SERVICES

- Capital Management and Facilities Planning (Boothby)
- Compliance and Privacy (Bybee)
- Finance (Haws/Haddy)
- Health Care Information Systems (Carmen)
- Human Resources (Wessels)
- Legal (Clamon)
- Marketing and Communications (Dean)
- Strategy and Health Policy (Vermeer)